

DE LA WARR
PAVILION

Michelle Roberts:

Red, Blue, Up

22 February to 1 June 2025



**Easy
Read**

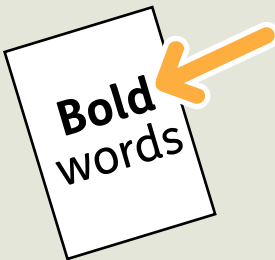
Easy Read



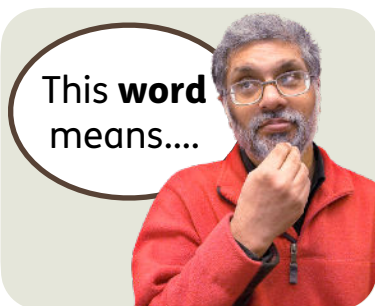
This is an Easy Read version of some information. It may not include all of the information but it will tell you about the important parts.



This Easy Read booklet uses easier words and pictures. Some people may still want help to read it.



Some words are in **bold** - this means the writing is thicker and darker. These are important words in the booklet.



Sometimes if a bold word is hard to understand, we will explain what it means.



Blue and underlined words show links to websites and email addresses. You can click on these links on a computer.

What is in this booklet

Welcome to the exhibition	4
Who is Michelle Roberts?	5
What is Red, Blue, Up about?	7
How Michelle makes her art.....	9
What can you see in the exhibition?.....	10
Special parts of the exhibition.....	12
Michelle and Project Art Works	15
How to enjoy the exhibition.....	17
Find out more	19

Welcome to the exhibition



This is information from De La Warr Pavilion in Bexhill.

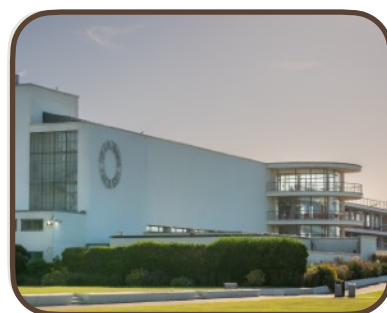


We have a new **exhibition** called Red, Blue, Up by the artist Michelle Roberts.

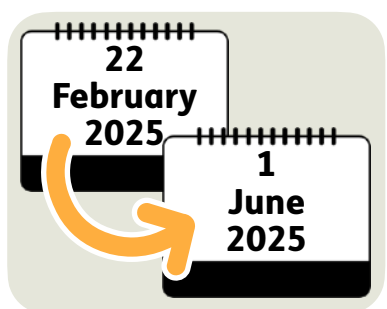
An **exhibition** is an event where you show something interesting to people.



Michelle Roberts draws and paints big, colourful pieces of art.



You can go to see the exhibition at De La Warr Pavilion in Bexhill.



You can visit the exhibition from 22 February 2025 to 1 June 2025.

Who is Michelle Roberts?



Michelle Roberts has drawn and painted all through her life.



When she was a young girl, she went with her grandfather when he painted art outdoors.



She has wanted to make art ever since then.



Michelle likes to paint big paintings that are about big ideas.



Ideas for her paintings come from living in the world, like going on holiday or films she has seen.

She has made paintings about:



- The Diamond Jubilee - this was when Queen Elizabeth II had been Queen for 60 years.



- Remembrance Day - this is when we remember the people who have died fighting in wars.

What is Red, Blue, Up about?



Red, Blue, Up has lots of artwork that Michelle has made over the last 15 years.



You can see lots of stories and memories in her paintings.



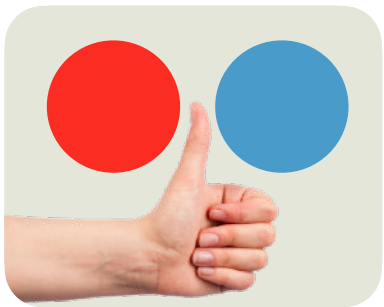
Michelle's artwork makes us slow down and take time to look at and feel the world around us.



You can see the different ways of seeing the world in her artwork.



The title of the exhibition ‘Red, Blue, Up’ is about how Michelle likes colours and having fun when she makes art.



Red and **Blue** are Michelle’s favourite colours.



The word **Up** gives you a little lift as you read the word.



You can see more about Michelle’s artwork on this website:
www.projectartworks.org/makers/michelle-roberts

How Michelle makes her art



Michelle draws and paints on canvas and paper.



Michelle uses photographs to remind her as she is painting or drawing her art.



Her artwork is often very colourful.



Michelle often uses different shapes and patterns in her drawings and paintings.



Each painting can take Michelle up to 12 to 14 weeks to make.

What can you see in the exhibition?



You can see paintings and drawings that Michelle has done over the past 15 years.



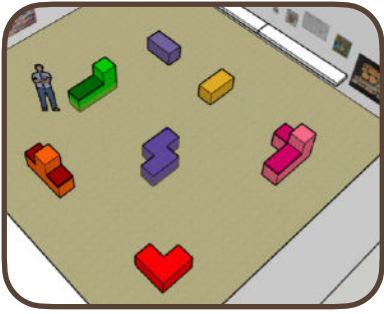
You can also see some sketchbooks which show how she makes art in an ordered way.



The sketchbooks are over 2 metres long, and they are folded up to show different parts of the book.



The sketchbooks have very detailed patterns on each of them.



Michelle has designed seating for the exhibition, which has bold colours and different textures.



Michelle chose the colours of the seating to match her artwork.



The seating reminds us of her artwork.

Special parts of the exhibition

Laser-cut shapes



Laser-cutting is when a powerful beam of light is used to cut a pattern into a material like wood.



There are 4 laser-cut drawings in the exhibition on top of the seats.



You can hold and touch the laser-cut drawings and feel the shapes with your hands.

Mixed media wall of artworks



When you enter the exhibition, you will see a wall of Michelle's different artwork.



It shows you all of the different ways that Michelle makes art.

You will see:



- 21 drawings.



- 5 paintings.



- 2 sketchbooks.

Seating



There are 6 benches that Michelle designed.



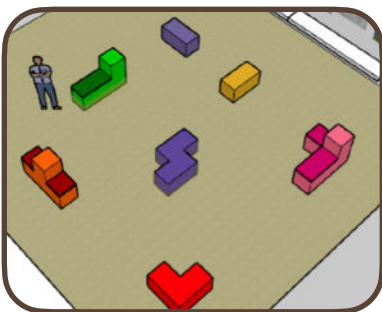
3 of the benches have backs to lean on and cushions.



The colours of the cushioned ones are red, blue and pink.



The colours of the non-cushioned ones without backs are yellow, purple and green.



The colours of the seats are the same as the pens that Michelle used to paint the seating area.

Michelle and Project Art Works

project art works



Project Art Works is an art studio for **neurodivergent** artists in Hastings.

Neurodivergent means your brain works in a different way to most people. You may be autistic or have a mental health condition.



Michelle is a member of Project Art Works.

Project Art Works projects:



- Help neurodivergent artists to create new work.



- Tell people about the talents of neurodivergent artists and people who care for them.

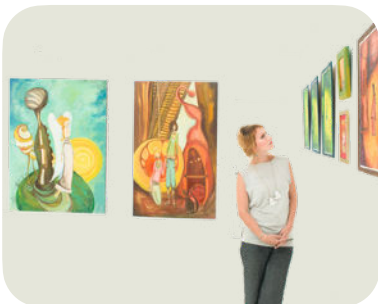
Outside In



We have worked with the arts charity **Outside In** to put on the Red, Blue, Up exhibition.

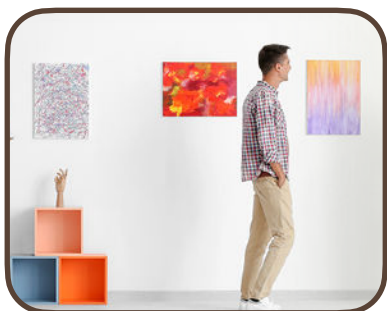


Michelle won a prize in their national open exhibition in 2023 called **Humanity**.



Michelle also took part in a group exhibition at De La Warr Pavilion in 2015 called **In the Realm of Others**.

How to enjoy the exhibition



Please take your time to listen and watch the artwork in the exhibition.



Try to look at the images and words closely.



We have information about the exhibition to read in other ways, like large print or braille.



We also have sound recordings for you to listen to of:

- What some of the artworks look like.



- A description of the exhibition.



To listen to these, you can scan the QR codes next to the artwork with the camera on your phone.



Please speak to a Gallery Assistant if you need help with these things.

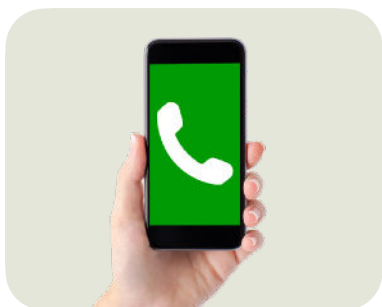
Find out more



You can look at our website here:
www.dlwp.com/exhibition/michelle-roberts



Our address is:
De La Warr Pavilion
Marina
Bexhill On Sea
East Sussex
TN40



You can contact us by:

- Phone: 01424 229 111



- Email: customerservice@dlwp.com

This Easy Read booklet was produced by easy-read-online.co.uk
The booklet includes images licensed from Photosymbols & Shutterstock.