

DE LA WARR  
PAVILION

# **Jaki Irvine: Ssh Ow**

22 February to 26 May 2025



**Easy  
Read**

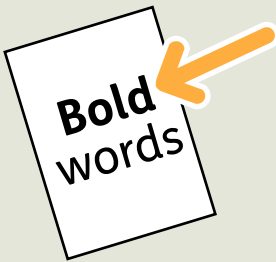
# Easy Read



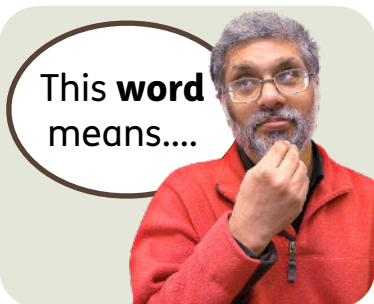
This is an Easy Read version of some information. It may not include all of the information but it will tell you about the important parts.



This Easy Read booklet uses easier words and pictures. Some people may still want help to read it.



Some words are in **bold** - this means the writing is thicker and darker. These are important words in the booklet.



Sometimes if a bold word is hard to understand, we will explain what it means.



[Blue and underlined](#) words show links to websites and email addresses. You can click on these links on a computer.

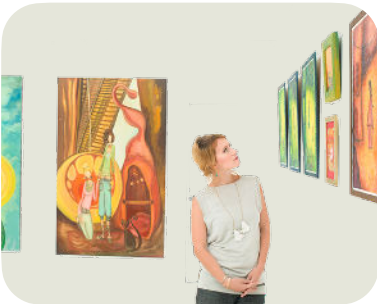
# What is in this booklet

Welcome to the exhibition .....	4
Who is Jaki Irvine?.....	6
What is Ssh Ow about?.....	9
The big artwork: Ack Ro' .....	11
How Ssh Ow feels .....	17
Special parts of the exhibition.....	19
Live performance: SHWO EM TEH WAY OT GO HMOE.....	22
How to enjoy the exhibition.....	23
Find out more .....	24

# Welcome to the exhibition



This is information from De La Warr Pavilion in Bexhill.



We have a new **exhibition** called Ssh Ow by the artist Jaki Irvine.

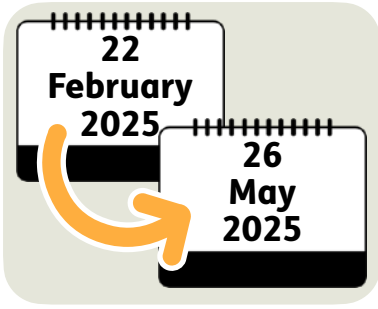
An **exhibition** is an event where you show something interesting to people.



Jaki Irvine's exhibition uses light, sound and images to make us think about the strange ways that humans behave.



You can go to see the exhibition at De La Warr Pavilion in Bexhill.



You can visit the exhibition from 22 February 2025 to 26 May 2025.



The exhibition can help us to think about the surprising and interesting things that happen in people's lives.

# Who is Jaki Irvine?



Jaki Irvine was born in Dublin in 1966 and she lives there now.



She makes artwork in lots of different ways, like:

- Video.



- Photography.



- Music.



- Writing.



Her artwork is about the ways we think about ourselves and the world around us.



She uses things that happen in everyday life to base her artwork on, like hearing what other people are talking about.



Jaki puts these pieces of real life that she hears or sees into her artwork.



In 1995, Jaki's work was included in General Release, which was an exhibition showing the work of young British artists at the **Venice Biennale**.

The **Venice Biennale** is a show of artwork from different countries. It happens every year in Venice, Italy.



Jaki created artwork for Ireland to show at the Venice Biennale in 1997.



Her artwork is shown in galleries including the Irish Museum of Modern Art and Tate Modern in London.



# What is Ssh Ow about?



Ssh Ow is Jaki Irvine's first big exhibition in the UK in more than 10 years.



Ssh Ow has sounds, images and words all coming to life in the space.



The exhibition is about memories, emotions and time.



Jaki uses her own memories and memories she shares with others in her work.



The title Ssh Ow is an **anagram** from a **sea shanty** called Show Me the Way to Go Home.



**Anagrams** are new words made by mixing up the letters of a word.



A **sea shanty** is a type of song that sailors used to sing when they were working on a boat.

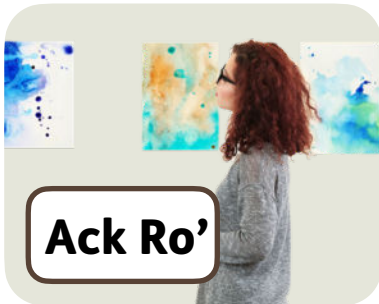


The live performance part of the exhibition is about the sea shanty.

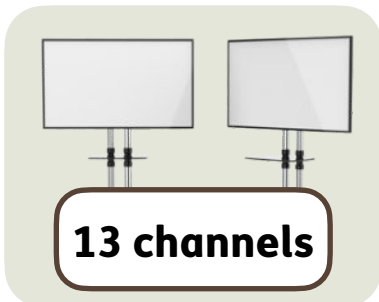


We will tell you more about the live performance on page 20.

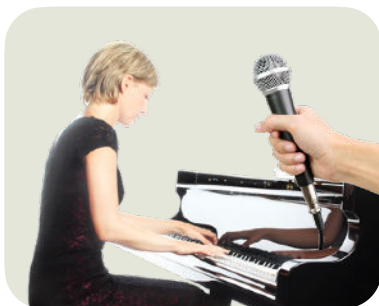
# The big artwork: Ack Ro'



The main part of the exhibition is a group of artworks called Ack Ro'.



This is a video with 13 different channels that surrounds you with sound, images and light.



You can see a woman singing, piano keys and a cymbal.



The music and light will be all around you as you are in the exhibition.



It might make you feel lost and confused, but it could also make you feel happy and comforted.



The confusing images and sounds are connected to the confusing effects of **dementia**.

**Dementia** is a disease in the brain. It affects your memory and behaviour.

The 13 screens show different images of:



- Hummingbirds



- Flowers



- Mesh banners



- Street lights

The 13 screens also show different images of:



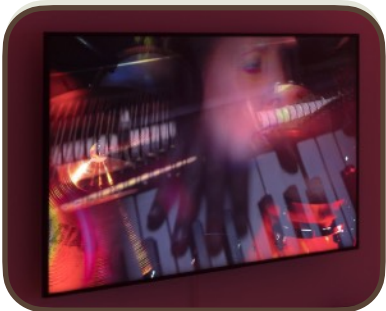
- Plants



- Louise Phelman singing.



- A cymbal shaking.



- Blurred piano keys mixing up with curving pink neon shapes.



3 screens show musicians playing an **improvised** version of the song Cracklin' Rosie by Neil Diamond.



**Improvised** means you are making it up on the spot.



The other 10 screens show clips of videos and sounds filmed in Dublin and Mexico City.

The sounds you will hear are:



- Louise Phelan's ghostly singing.



- Joe O'Farrell playing the flute.

The sounds you will hear are also:



- Izumi Kimura playing the piano.



- Sarah Grimes playing percussion instruments like a cymbal.



You will see the pink neon words around the gallery.



The pink words are anagrams from the song Cracklin' Rosie by Neil Diamond.



They make you think about how words and language can be changed over and over again.



You can see more about Ak Ro'  
including a video on this website:  
[www.frithstreetgallery.com/  
exhibitions/5/works/artworks-14669-  
jaki-irvine-ack-ro-2019](http://www.frithstreetgallery.com/exhibitions/5/works/artworks-14669-jaki-irvine-ack-ro-2019)



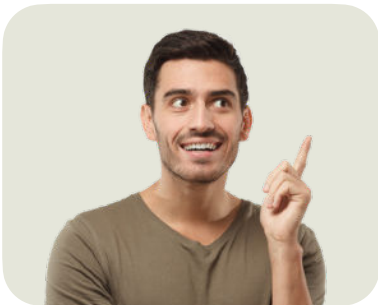
# How Ssh Ow feels



The lights, sounds and images in Ssh Ow can make you feel lost and confused.



Jaki uses the sounds in a rhythm to repeat over and over again.



This can make you feel like you understand where you are.



It lets you think about what has happened in your life.



You might feel sad about things that have happened in the past.



You might think about things that you have stopped worrying about.

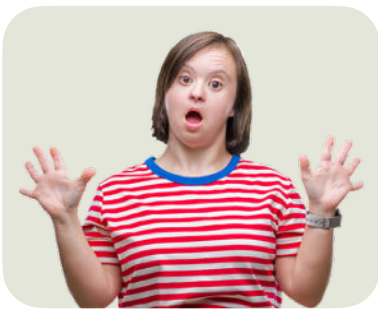
The sounds and images help us to:



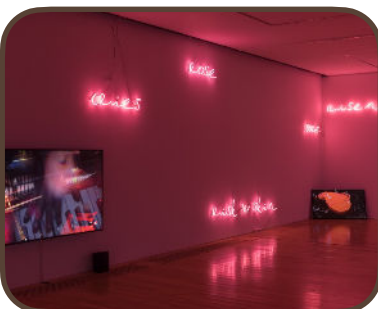
- Think about the different ways of being human.



- Think about how time can mean different things to different people.

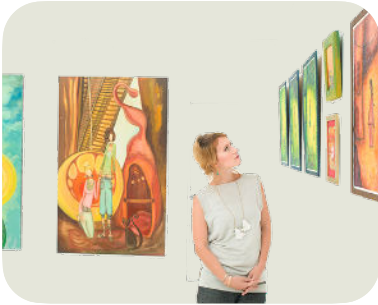


Being in the exhibition might feel confusing or dreamy.



This is because the lights, sounds and images are moving and happening at different times.

# Special parts of the exhibition



There are some special parts of the exhibition we would like to tell you about.

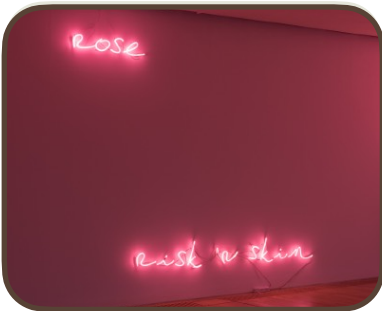
## Pink neon signs

The screens in Ack Ro' are surrounded by pink neon signs, saying things like:

- ro' ro' rose



- near so near



- clean clear cackles



- rack ack ack





The neon signs look like they are floating around the gallery.



They make you think about how words can change.



Adding, taking away or moving letters in words can make them mean new things.



This is a bit like how people forget and remember memories in different ways over time.

## Mesh banner



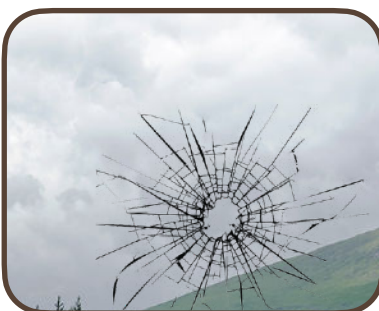
There is a 27 metre long mesh banner outside the south windows of the ground floor of the gallery.



Jaki Irvine made the banner for this exhibition.



The banner helps to lower the amount of light in the gallery.



The image on the banner is of red broken glass and a cloudy sky.



The banner will be outside the building, and you will be able to see it from inside the gallery.

# Live performance: SHWO EM TEH WAY OT GO HMOE



The exhibition includes a new piece of live artwork called SHWO EM TEH WAY OT GO HMOE.



The artwork will be performed on 24 May 2025 in the auditorium at De La Warr Pavilion.

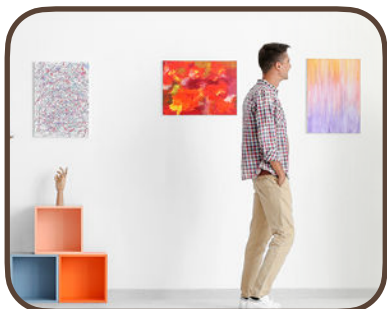


The performance will include music based on the song Show Me the Way to Go Home (1925), which you might remember from the film Jaws (1975).



You can buy tickets for the performance from the Box Office at De La Warr Pavilion or on our website: [www.dlwp.com](http://www.dlwp.com)

# How to enjoy the exhibition



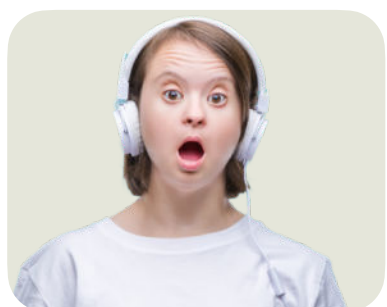
Please take your time to listen and watch the artwork in the exhibition.



Try to look at the images and words closely.



We have information about the exhibition to read in other ways, like large print or braille.



We also have sound recordings of what the artwork looks like for you to listen to.



Please speak to a Gallery Assistant if you need help with these things.

# Find out more



You can look at our website here:

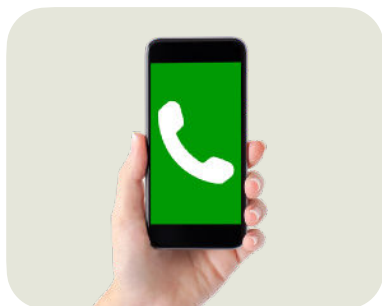
[www.dlwp.com/exhibition/jaki-irvine-ack-ro](http://www.dlwp.com/exhibition/jaki-irvine-ack-ro)



Our address is:

De La Warr Pavilion  
Marina  
Bexhill On Sea  
East Sussex  
TN40

You can contact us by:



- Phone: 01424 229 111



- Email: [customerservice@dlwp.com](mailto:customerservice@dlwp.com)

This Easy Read booklet was produced by [easy-read-online.co.uk](http://easy-read-online.co.uk)  
The booklet includes images licensed from Photosymbols & Shutterstock.